

# Chorale Audition Form 2024-2025

## Audition Information

### 1. Choose a solo song to perform a cappella.

Select one of the five songs to sing a cappella 1. Star Spangled Banner, 2. My Country 'Tis of Thee, 3. America the Beautiful, 4. Happy Birthday 5. Something that has a full octave range or more.

### 2. Perform a sight reading passage and sing a major scale.

A choral sight reading example will be provided similar to the corresponding packet of practice sight reading examples. You will be asked to sing the sight singing example in its entirety, usually 8 measures. You will have 1 minute to look over the example before you perform. "Do" will be given to you and Mr. Potts will play the starting note and tell you what it is. You will be asked to sing a major scale (drmfsltd/dtlfsmrd) a cappella for the warm up. I suggest that you use solfege (do, re, mi, fa, so...) You may sing it on any syllable. Accuracy of rhythms and pitches will be measured.

### 3. Pitch Recognition

A series of pitches will be played on the piano and you will be asked to sing them back on a neutral syllable. No more than 5 pitches will be played in a row.

### 4. Interview Questions (to be completed on Google docs)

Student Name:

Voice Part:    Soprano            Alto            Tenor            Baritone            Bass

Grade level for next year (2024-25):    Sophomore            Junior            Senior

Years in choir: \_\_\_\_\_(high school level only)

Do you play an instrument? \_\_\_\_\_ which one? \_\_\_\_\_

Are you currently taking voice lessons or plan to take voice lessons?

No                            Yes    if yes, who is your teacher? \_\_\_\_\_

### Interview Questions: (complete on the back page of this paper)

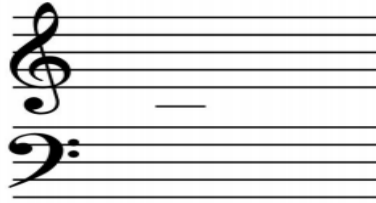
- What community/school musical activities are you involved in?
- Why do you want to be in Chorale?
- What will you contribute to the choir
- What are your musical goals for the upcoming school year?

**BRING THIS PAGE, including your/typed responses, back to your audition. Audition Times are posted outside of the WHS choir room door.**

Student Name: \_\_\_\_\_ Audition Date: \_\_\_\_\_

**Director's Score Sheet (for information only - to be used during auditions)**

Student Range



**I. Solo Song - a cappella**

	4	3	2	1
Tone	Clear and focused. Will blend well with others.	Clear, focused and centered. Extremes in the range and less controlled. Tone quality does not detract from overall performance.	Clear, focused. Extremes in range. Will probably blend with others. May detract from overall performance.	Lacking focus and center. Does not blend well with others.
Intonation	Sings on pitch consistently. Pitch is accurate and secure.	An occasional isolated error, but mostly accurate and secure.	Some accurate pitches, but mistakes in whole and half step placements.	Very few accurate pitches or secure pitches.
Musicality	Very musical. The song was performed with good phrasing and dynamics.	High quality. Phrasing was somewhat present. Breaths did not detract from performance.	Somewhat musical performance. Tempo and breaths may have been awkward.	Unmusical performance. Lack of phrasing and breath control.

**II. Sight Singing Performance**

Sings accurately the first time.	Gets most of the notes correct; needs a second attempt.	Gets many of the notes correct; needs 2+ attempts	Attempts, but does not get most notes correct	Cannot attempt
4	3	2	1	0

**III. Pitch Recognition - 2 examples**

Sings accurately the first time.	Gets most of the notes correct. Missed one note.	Misses 2 notes.	Attempts, but only gets one note correct.	Attempts, but is unable to sing back any correct pitches.
4	3	2	1	0

Song	1	2	3	4	_____
Sight Reading	-	0	1	2	_____
Pitch Recognition	1	2	3	4	_____
Written Questions	1	2	3	4	_____
					Total Score _____

**Total Score:** \_\_\_\_\_

**Choir Placement:** \_\_\_\_\_